

POWER TRANSMISSION SOLUTIONS FOR FEED MIXERS



Comer Industries is a global leader in the design and production of **advanced engineering systems and mechatronic solutions for power transmission**, supplied to **major manufacturers of agricultural and industrial machinery** worldwide.

Founded in 1970 in Reggio Emilia, Reggio Emilia, Italy, for the manufacturing of gearboxes for agricultural machinery, the company has progressively enlarged its range with complete transmissions also for the industrial and mobile markets, to ensure customers added value and competitive advantages.

Industrial operations in Italy are structured in four **Operating Units**, specialized by product line: **Gearboxes, Driveshafts, Planetary Drives & Axles** and **Comer Industries Components** – located in the provinces of Reggio Emilia, Mantua and Matera. In China, where the company has a consolidated presence since more than 20 years, the **Operating Unit in Shaoxing** (Zhejiang province) has been manufacturing transmissions for agricultural and wind applications since 2008.

Comer Industries is part of the Italian **IDE_Agri network** of companies for the development of **ISOBUS** application and digital electronics (<http://www.ideagri.net/>).

The **Mix@tractor project** by IDE_Agri uses an innovative hardware/software platform for coordinated management of the tractor and implement functions during the Unifeed mixing stages, resulting in an optimized cycle in terms of fuel consumption, emissions, noise pollution, safety and duration of the operations.

“Comer Industries’ strategic vision: developing innovative products for the sustainable growth of the planet.”



HEAVY-DUTY SPEED CHANGE GEARS



MODULAR AUGER DRIVES



RIGID AND STEERING AXLES



PROFESSIONAL RANGE OF DRIVESHAFTS AND SAFETY DEVICES



PLANETARY WHEEL DRIVES



PLANETARY DRIVES & AXLES PLANT



DRIVESHAFTS PLANT



GEARBOXES PLANT

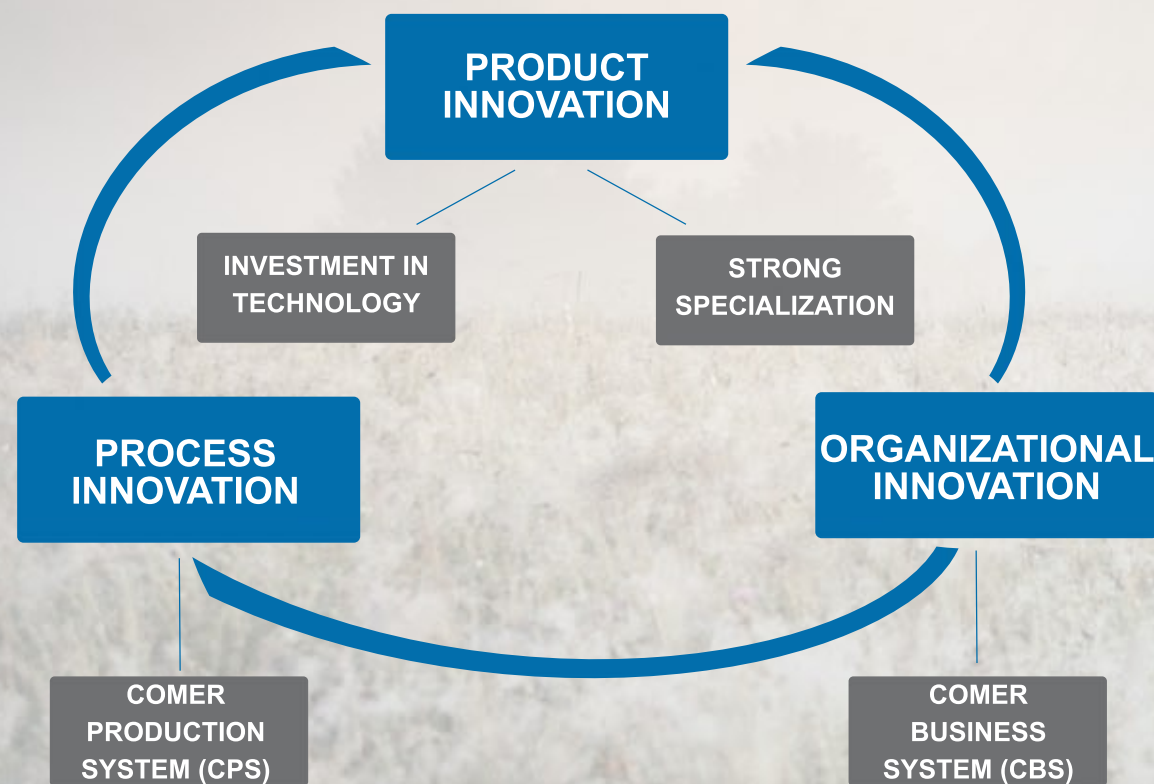


SHAOXING PLANT

EXCELLENCE & INNOVATION

Innovation in Comer Industries arises from the **product**, the heart of the company. Product solutions grow out from associates' engineering and management skills, transmitting knowledge acquired in 45 years of research and continuous improvement. **Investment in technology** and a **strong specialization** allow creating customized solutions for OEMs. **Product excellence** is achieved through the rigorous application of the APQP (Advanced Product Quality Planning) methodology to comply with delivery on time and in accordance with ISO TS 16949.

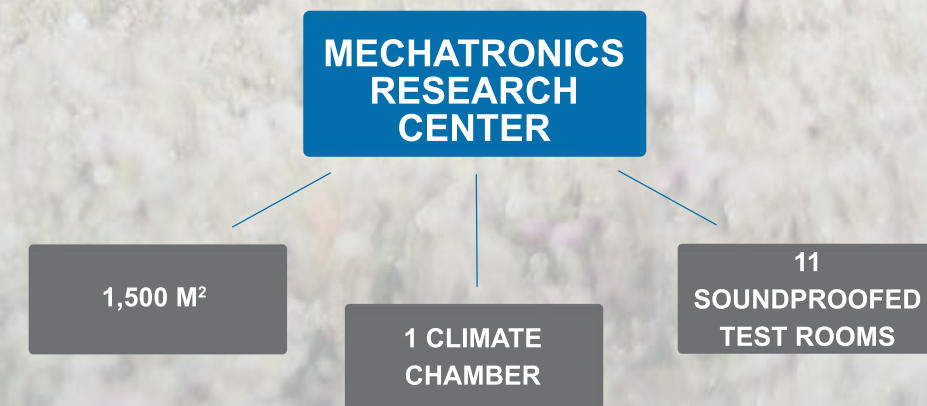
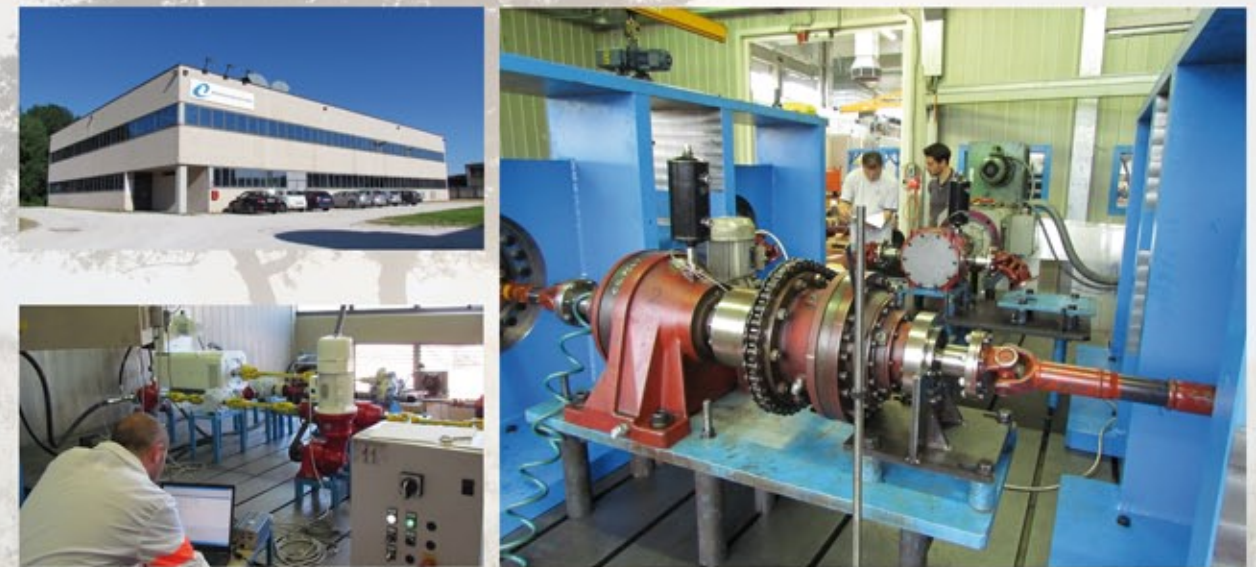
Innovation also concerns **company's processes**: the application of **Comer Production System (CPS)**, an integrated model for manufacturing processes' management, is leading to an operational simplification and to the achievement of **world class quality standards**. **Organizational innovation** is pursued through the adoption of **Comer Business System (CBS)**, which ensures the successful execution of the three year-strategic plan and provides an integrated approach to **change, continuous improvement** and **profitable growth**.



“The Comer Production System consists of methods and best practices adopted to boost competitiveness through manufacturing excellence.”

To develop and test **innovative products**, Comer Industries set up in 1996 the **Mechatronics Research Center**, the first mechatronic laboratory (2002) in Italy to be included in the Association of Public and Private Research centers recognized from the Italian Ministry of Universities and Research. Covering an area of **1,500 m²** (16,000 ft²), this facility has **1 climate chamber** and **11 soundproofed test rooms**, equipped with cutting-edge devices and simulators to reproduce machine operating environment, thus optimizing product performances and reducing both prototyping lead-time and customer time-to-market for new machines. Its team of application engineers is specialized in acquiring machine performance data, using advanced measuring instruments.

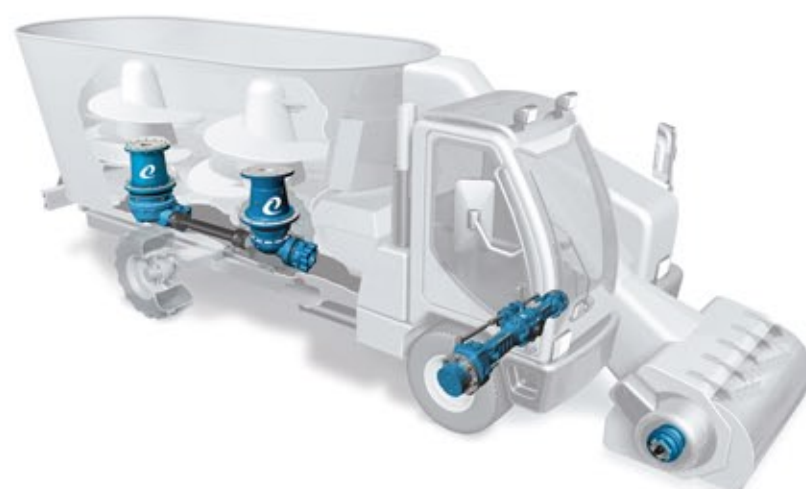
Comer Industries can also rely on its **Metallographic Laboratory** for chemical and materials' analysis.



“Forage mixing and processing machinery requires specialized transmission systems to ensure high performance and maximum efficiency.”



TRAILED VERTICAL FEED MIXERS



SELF-PROPELLED VERTICAL FEED MIXERS

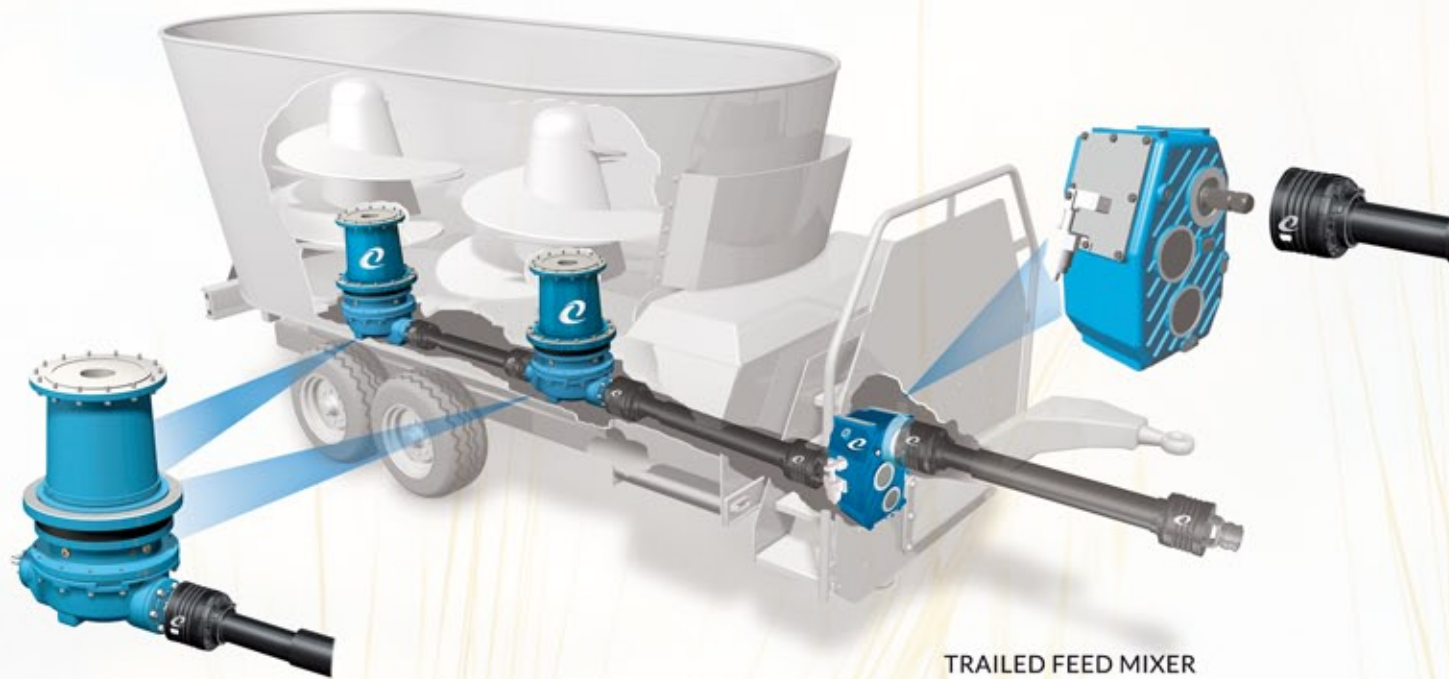


BIOGAS MACHINES

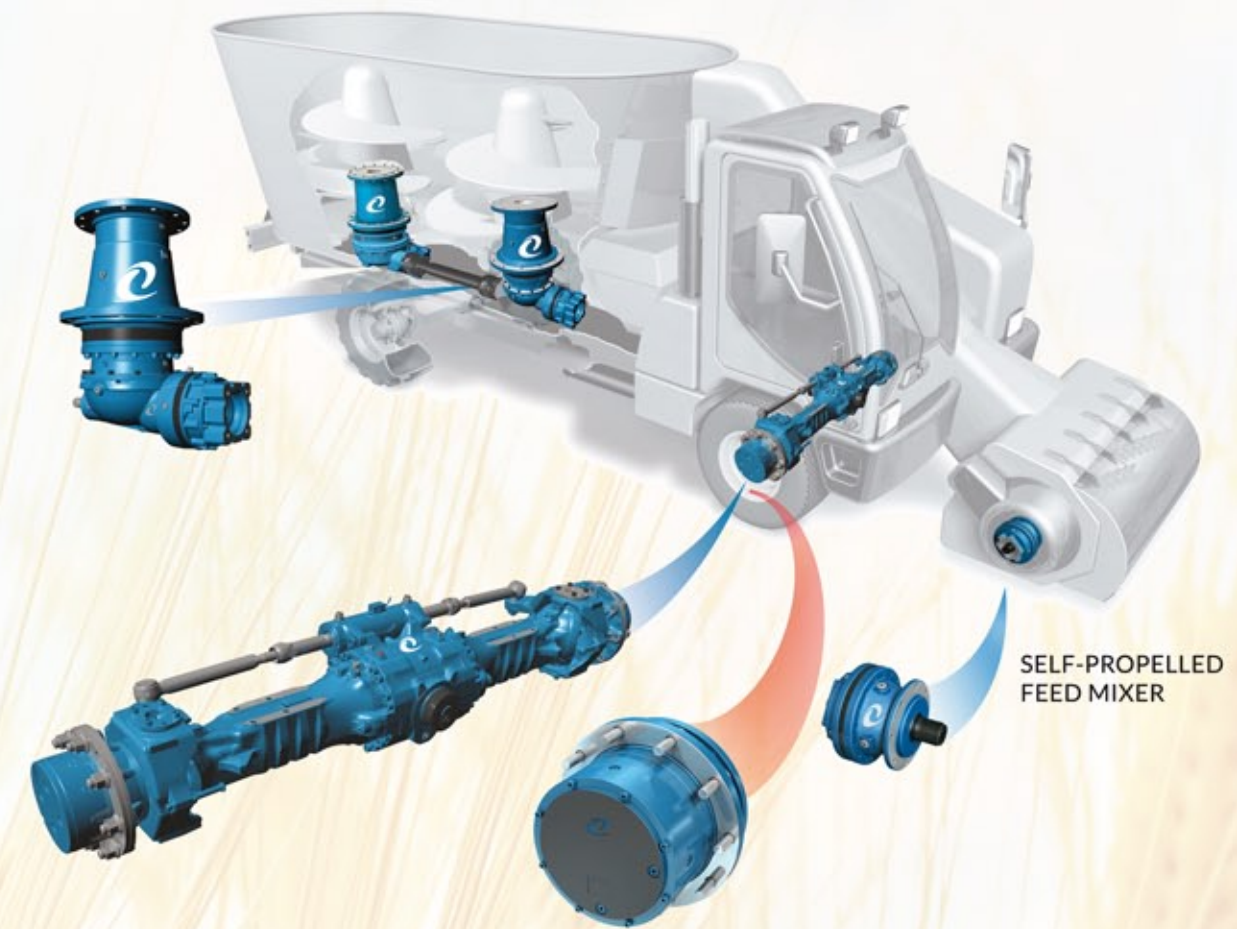
ADVANTAGES

- **Complete systems for power transmission:**
 - **Rigid and Steering Axles**
 - > best braking and efficiency performance.
 - **Professional Range of Driveshafts and Safety Devices**
 - > high safety performance
 - > ease of maintenance
 - > long greasing intervals.
 - **Heavy-Duty Speed Change Gears**
 - > low-noise helical gear transmission featuring gears
 - > internal pre-load mechanism enabling gear change and automatic re-engagement
 - > electric actuator device to pilot change gear.
 - **Modular Auger Drives**
 - > transmission of the vertical and horizontal drive to the augers
 - > compact and versatile solutions that can be combined with hydraulic motors.
 - **Planetary Wheel Drives**
 - > compact drives
 - > high level of performances
 - > robustness
 - > easy and economical installation on machines
 - > reliability for the application
 - > excellent mobility required by vehicle type.
- **Wide product range:** highly-personalized, versatile and cutting-edge transmissions.
- **Boosted efficiency and attention to the environment.**
- **A proven 25 year- track record in the design and manufacturing of power transmission for feed mixers:**
 - From the 90s
 - > production of parallel axis speed change gears
 - > development of modular auger drives.
 - In the 2000s
 - > offer enlarged with axles.
- **Strong engineering competences and continuing input towards excellence from R&D.**
- **Long-time experience in field testing, powering duty cycle machinery and solving customer' expectations.**

SOLUTIONS FOR VERTICAL FEED MIXERS



TRAILED FEED MIXER



SELF-PROPELLED FEED MIXER



N-673J
DP-732A
C-3A
A-613R



VP-6 EN-60
VP-7 EN-80
VP-8 EN-90
VP-9



PGA-1002/3	PGA-2012/3
PGA-1202	PGA-2502
PGA-1602/3	PGA-3003/4
PGA-1702/3	PGA-4203



PGA-1603	PGA-3004
PGA-1703	PGA-4204
PGA-2103	
PGA-2503	



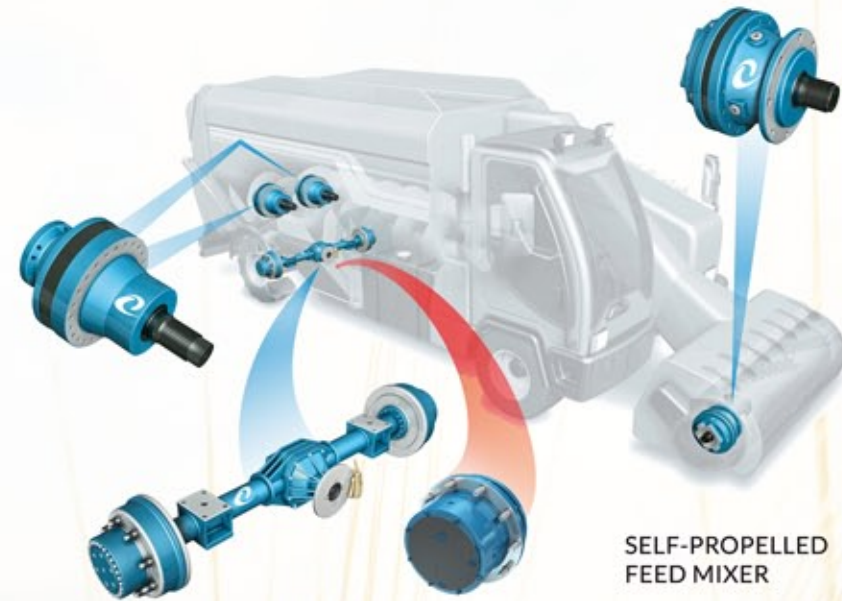
F-238
S-238



PGWF-802	PGWF-4802/3
PGWF-1702/3	
PGWF-2502/3	
PGWF-3602/3	

MILLING HEAD:
PG-161
PG-251
PG-501

SOLUTIONS FOR HORIZONTAL FEED MIXERS



SELF-PROPELLED
FEED MIXER



AUGER:
PG-1602
PG-2502

MILLING HEAD:
PG-161
PG-251
PG-501



5970



PGWF-802
PGWF-1702/3
PGWF-2502/3
PGWF-3602/3

PGWF-4802/3



TRAILED FEED MIXER



PG-702
PG-1002
PG-1602
PG-1802

PG-2502
PG-3002
PG-3503



VP-6 EN-60
VP-7 EN-80
VP-8 EN-90
VP-9

SOLUTIONS FOR BIOGAS MACHINES



VP-6 EN-60
VP-7 EN-80
VP-8 EN-90
VP-9



PGA-1002/3
PGA-1202
PGA-1602/3
PGA-1702/3

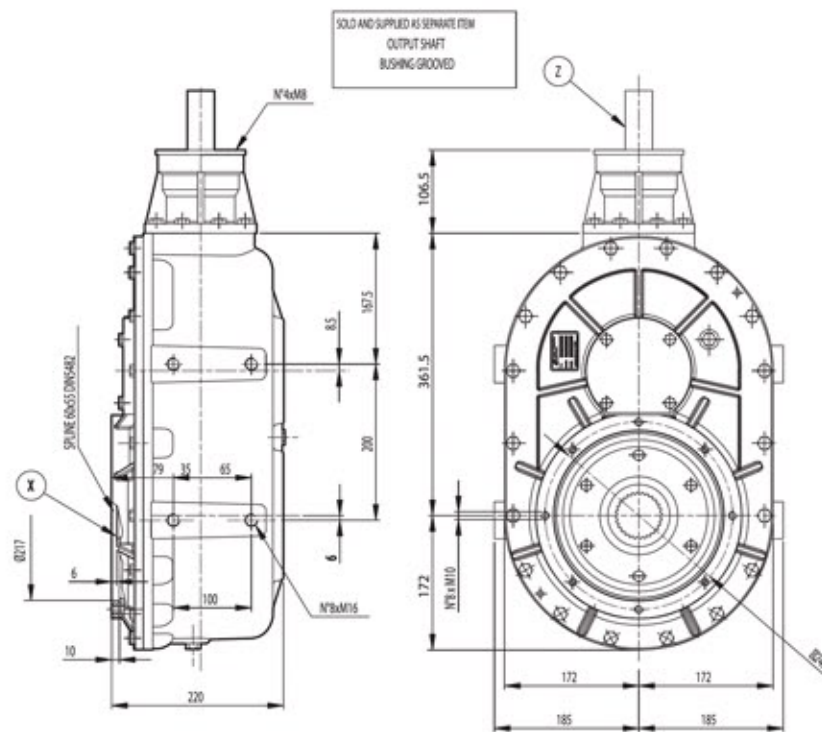
PGA-2102/3
PGA-2502/3
PGA-3003/4
PGA-4203/4



HEAVY-DUTY SPEED CHANGE GEARS

HEAVY-DUTY SPEED CHANGE GEARS FOR TRAILED VERTICAL FEED MIXERS

N-673J gearbox equips single auger trailed vertical feed mixers (up to 4 m³). The unit is compact, with helical bevel and parallel axis transmission.

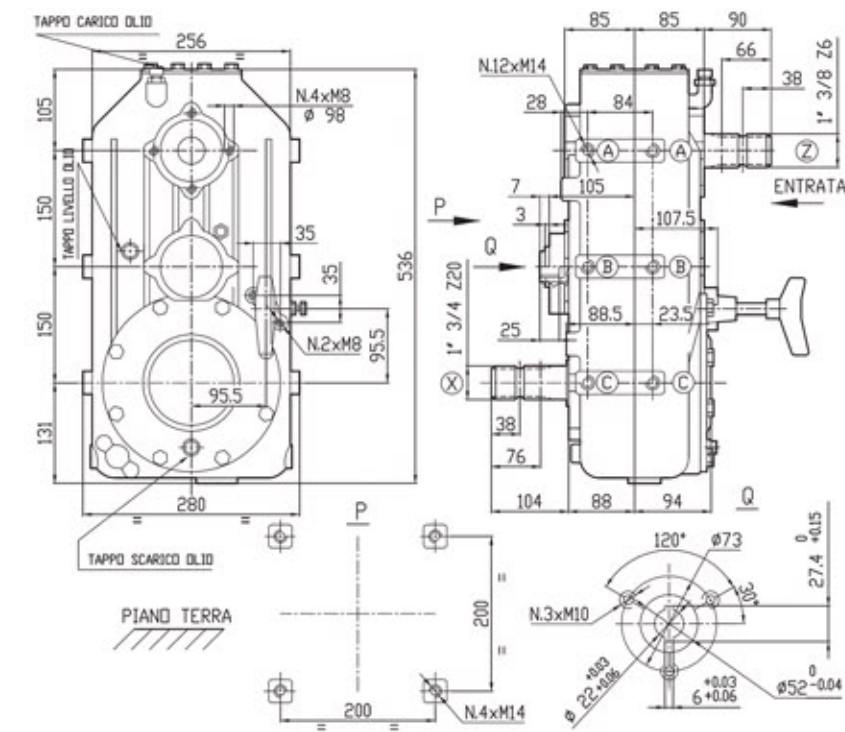


Type	Transmission Ratio i	Transmissible Power HP	Maximum Torque Nm	Maximum Input Speed rpm	Input	Weight kg
N-673J	10.8:1	75.0	1,022	540	Z	110
	15.0:1	45.0	895			

DP-732A gearbox two speeds change gears is applied on single or double augers trailed vertical feed mixers (up to 10-12 m³ for single auger).

Two speed gear change is available with following options:

- hydraulic actuator for gear shifting
- electric actuator with two positions for gear shifting
- electric actuator with three positions (neutral) for gear shifting
- pump coupling
- optional left output shaft to cutters.



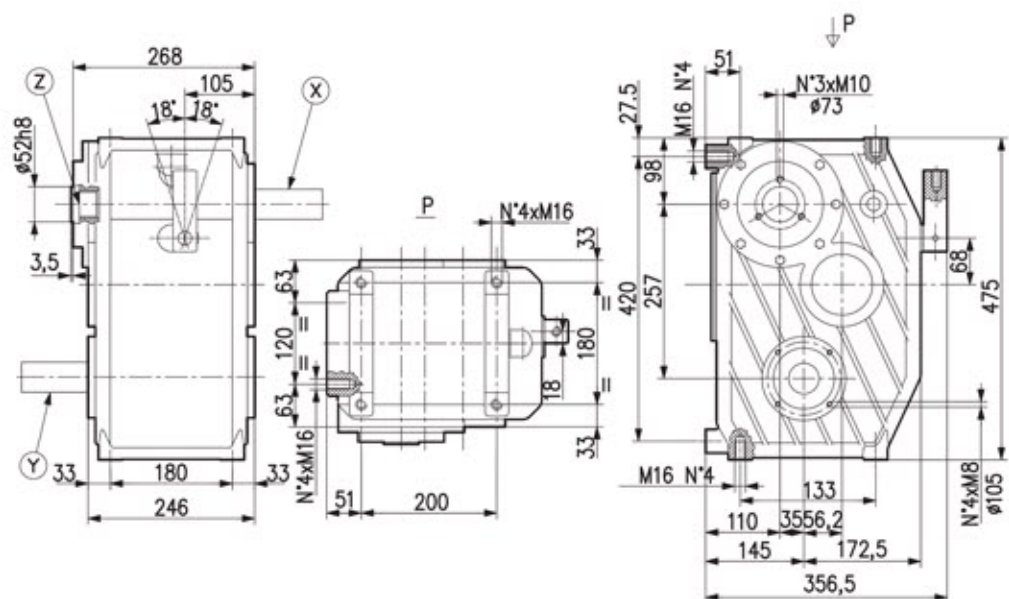
Type	Transmission Ratio i							Transmissible Power HP	Maximum Input Speed rpm	Input	Weight kg
DP-732A	1:1/1.16:1	1:1/1.23:1	1:1/1.41:1	1:1/1.52:1	1:1/1.68:1	1:1/1.88:1	1:1/1.93:1	80.0	540	Y	62

C-3A gearbox two speeds change gears equips trailed vertical feed mixers. The unit is available in two versions:

- **C-3A standard version** (single auger up to 16 m³ and double augers up to 32 m³)
- **C-3A reinforced version** (single augers up to 18 m³ and double augers up to 38 m³)

Two speed gear change is available with following options:

- **"Easy-Shift" system** for shifting gear with preload mechanism inside the unit
- **hydraulic actuator with two positions** for gear shifting
- **electric actuator with two positions** for gear shifting
- **electric actuator with three positions (neutral)** for gear shifting
- **pump coupling.**

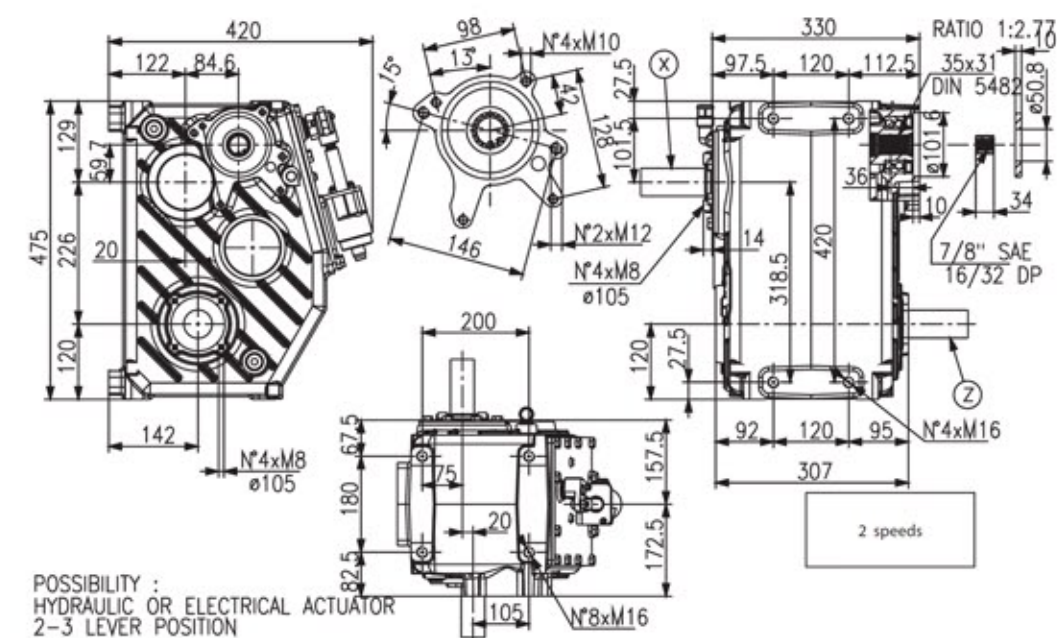


Type	Transmission Ratio i			Transmissible Power HP	Maximum Input Speed rpm	Input	Weight kg
C-3A	1:1/1.5:1	1:1/1.8:1	1:1/2.18:1	125	540	X	100
	1.28:1/2.30:1	1.8:1/2.73:1	1.8:1-3.2:1	175	1,000		
C-3A reinforced	1:1/1.8:1	1.25:1/1.67:1		150	540	X	100
	1.57:1/3.26:1			205	1,000		

A-613R gearbox two speeds change gears with low noise helical gears is applied on double or triple augers trailed vertical feed mixers (from 35 m³ for double augers).

Two speed gear change is available with following options:

- **hydraulic actuator** for gear shifting
- **electric actuator with two positions** for gear shifting
- **electric actuator with three positions (neutral)** for gear shifting
- **high speed pump connection standard**
- **optional low speed pump connection.**



Type	Transmission Ratio i				Transmissible Power HP	Maximum Input Speed rpm	Input	Weight kg
A-613R	1:1/1.3:1	1:1/1.5:1	1:1/1.8:1	1.8:1/2.7:1	180	540	Z	105
					245	1,000		



DRIVESHAFTS & SAFETY DEVICES

VP DRIVESHAFT SERIES FOR TRAILED FEED MIXERS AND STATIONARY MACHINES (BIOGAS, OTHER APPLICATIONS)

The **VP driveshafts professional series** is designed to meet the demands of **high performance intensive use**. VP driveshafts offer enhanced **safety** and **reliability** through advanced solutions such as **hexalobate profiles** and **tubes with NITREG treatment**, which allows:

- increased **wear resistance**
- reduced **axial thrusts in extension**
- extended **maintenance intervals**.

The new **VP series protection** has passed all Irstea tests with greasing intervals every 250 hours.

Type	Power HP	Continuous Torque		Maximum Dynamic Torque		Speed rpm	ASAE Category	
		Nm	in-lb	Nm	in-lb		Regular Duty	Heavy Duty
VP-6	54	707	6,257	1,350	11,949	540	5	4
	83	582	5,152			1,000		
VP-7	69	901	7,977	1,580	13,985	540	6	4
	106	744	6,588			1,000		
VP-8	90	1,166	10,323	2,100	18,587	540	6	5
	136	954	8,446			1,000		
VP-9	110	1,431	12,670	2,430	21,508	540	7	5
	166	1,164	10,305			1,000		
VP-10	132	1,714	15,172	2,930	25,933	540	8	7
	200	1,403	12,416			1,000		

EN DRIVESHAFT SERIES FOR TRAILED FEED MIXERS AND STATIONARY MACHINES (BIOGAS, OTHER APPLICATIONS)

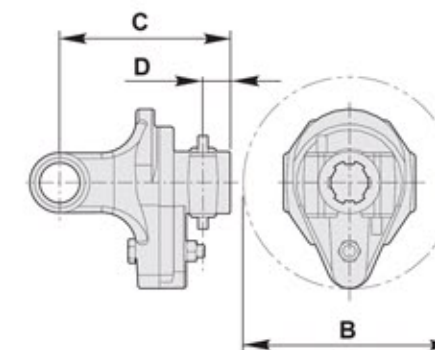
Principal characteristics of **EN guard** are the following:

- **retractable cones** for easier attachment/removal of the transmission to the PTO
- **quick and easy cone engagement/disengagement** for excellent access to transmission grease points
- **interchangeable cones** on both sides.

Type	Power HP	Continuous Torque		Maximum Dynamic Torque		Speed rpm	ASAE Category	
		Nm	in-lb	Nm	in-lb		Regular Duty	Heavy Duty
EN-60	68	880	7,790	1,510	13,360	540	5	4
	105	740	6,510			1,000		
EN-80	100	1,300	11,500	2,390	21,150	540	6	5
	154	1,080	9,550			1,000		
EN-90	120	1,560	13,800	2,900	25,700	540	7	6
	190	1,340	11,850			1,000		

TORQUE LIMITER SAFETY DEVICE

The **torque limiter** interrupts the power transmission when the torque exceeds the setting value, by shearing the bolt. Transmission is restored by inserting a new bolt in the device.



Type	B mm	C mm	D mm	Maximum Torque	
				Nm	in-lb
60	162	137	22	2,500	22,100
80	162	146	22	3,500	30,900
90	162	152	22	4,000	35,400

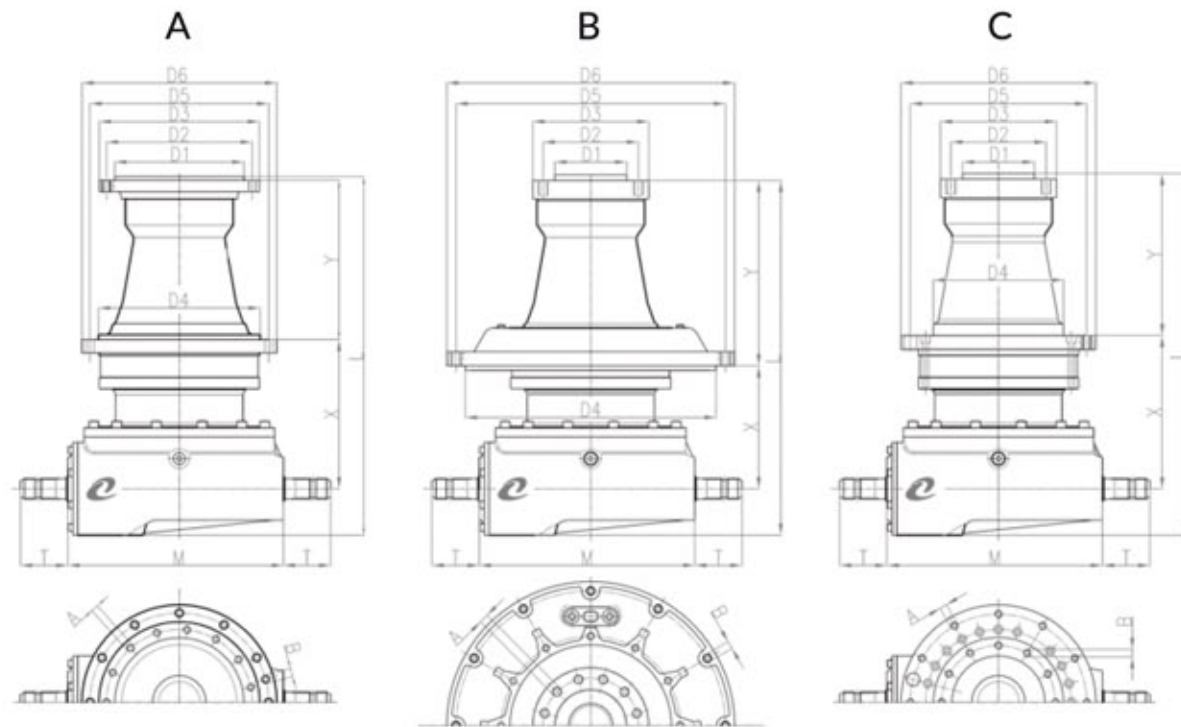


MODULAR AUGER DRIVES

Comer Industries' **modular auger drives** are designed to suit feed mixers up to 52 m³ (1,836 cubic-ft). This product range is large and extremely versatile because of its modularity that features **high power density and reliability**.

One out of two feed mixers currently in the field are equipped with Comer Industries' modular auger drives. Comer Industries is an undisputed **market leader** thanks to its **continuous investment in new product technology** and an **unparalleled value** it can offer to its customers.

PGA MODULAR AUGER DRIVES FOR TRAILED VERTICAL FEED MIXERS AND STATIONARY MACHINES (BIOGAS, OTHER APPLICATIONS)



Dimensions (mm)														
Size	Type	D1	D2	D3	A	D4	D5	D6	B	L (*)	X (*)	Y	M	T
PGA-1002/3	C	160 H8	195	225	M16 x N°12	280 F7	314	346	Ø15 x N°18	688.2/760.5	254.7/327	321	464	105
PGA-1202	C	160 H8	195	225	M16 x N°12	280 F7	314	346	Ø15 x N°16	670	254.5	321	376.5	102
	A	278 H8	314	345	M16 x N°15	348 H8	385	420	Ø17 x N°12	764.5/836.5	321.5/394	343	464	102
PGA-1602/3	B	154.8 H8	205	250	M20 x N°12	540 H8	580	620	Ø17.5 x N°12	764/836.5	265/337.5	399	464	102
	C	154.8 H8	205	250	M20 x N°12	348 H8	385	420	Ø17 x N°12	764/836.5	321.5/394	342.5	464	102
	A	278 H8	314	345	M16 x N°15	348 H8	385	420	Ø17 x N°12	764.5/836.5	321.5/394	343	464	102
PGA-1702/3	B	154.8 H8	205	250	M20 x N°12	540 H8	580	620	Ø17.5 x N°12	764/836.5	265/337.5	399	464	102
	C	154.8 H8	205	250	M20 x N°12	348 H8	385	420	Ø17 x N°12	764/836.5	321.5/394	342.5	464	102
	A	278 H8	314	345	M16 x N°20	348 H8	385	420	Ø17 x N°23	783/855.5	321.5/394	343	464	102
PGA-2102/3	B	154.8 H8	205	250	M20 x N°18	540 H8	580	620	Ø17.5 x N°12	782.5/855	265/337.7	399	464	102
	C	154.8 H8	205	250	M20 x N°18	348 H8	385	420	Ø19 x N°12	782.5/855	321.5/394	342.5	464	102
PGA-2502	A	140 H7	425	470 H8	M22 x N°12	480 H8	520	580	Ø25 x N°12	868.5	368.5	400	464	102
PGA-3003/4	A	140 H7	425	470 H8	M22 x N°12	480 H8	520	580	Ø25 x N°12	1,027.5	527.5	400	464	102
PGA-4203	A	140 H7	425	470 H8	M22 x N°24	480 H8	520	580	Ø25 x N°24	1,084	584	400	464	102

(*) First number refers to second stage. Second number refers to third stage.

Size	Continuous Torque Nm	Maximum Torque Nm	Input Speed rpm	Transmission Ratio (Min-Max) i	Input Shaft
PGA-1002/3	8,500	17,000	540	16.8-30.6	1 3/4 Z20
PGA-1202	11,600	23,200	540	11.1-19.4 (*)	1 3/4 Z20
PGA-1602/3	15,700	31,400	540	13.4-47.5	1 3/4 Z20
PGA-1702/3	15,700	31,400	540	13.4-47.5	1 3/4 Z20
PGA-2102/3	21,000	47,000	540	12.1-62.1	1 3/4 Z20
PGA-2502	23,780	48,000	540	13.6-23.6 (*)	1 3/4 Z20
PGA-3003/4	30,760	61,520	540	25.7-84.4	1 3/4 Z20
PGA-4203	42,000	142,000	540	27.8-91.4	1 3/4 Z20

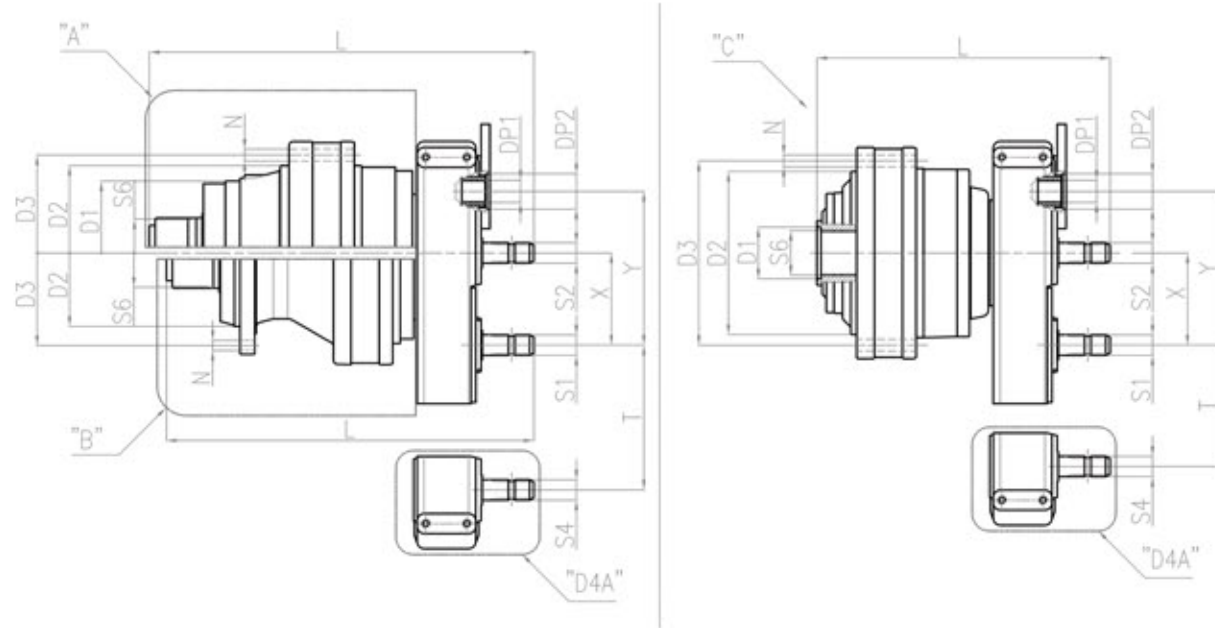
(*) Values referred to continuous torque and maximum torque may vary.

PGA MODULAR AUGER DRIVES FOR SELF-PROPELLED VERTICAL FEED MIXERS AND STATIONARY MACHINES (BIOGAS, OTHER APPLICATIONS)

Size	Continuous Torque Nm	Maximum Torque Nm	Transmission Ratio (Min-Max) i
PGA-1603	15,700	31,400	24.4-116.9
PGA-1703	15,700	31,400	24.4-116.9
PGA-2103	21,000	47,000	31.8-126.5
PGA-2503	23,780	48,000	35.7-142.2
PGA-3004	30,760	61,520	97.4-612.3
PGA-4204	42,000	142,000	105.4-662.8

(*) Motor predispositions SAE C / SAE D, IEC, NEMA and others.

PG MODULAR AUGER DRIVES FOR TRAILED HORIZONTAL FEED MIXERS

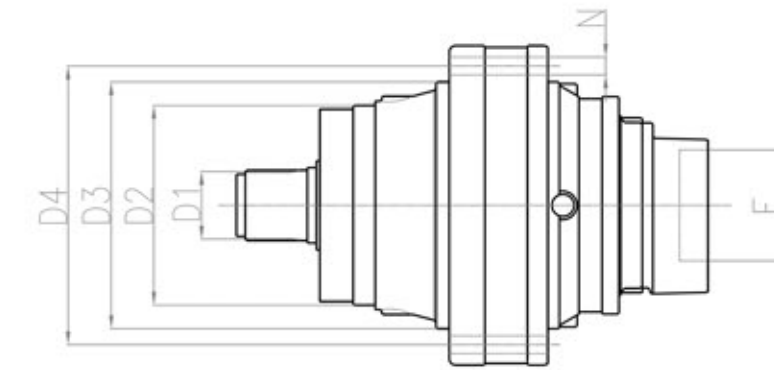


Size	Transmission Ratio (*) i	Output Type	D1	D2	D3	N	L	S6
PG-702	18.2	B		200 F7	250	Ø15 x N°12	646.5	70x64 DIN5482
PG-1002	18.3	B		230 F7	295	Ø17 x N°10	627.5	80x74 DIN5482
PG-1602	13.4-33.6	B		230 F7	295	Ø17 x N°10	693	100x94 DIN5482
		C	88 H8	278 F7	314	Ø15 x N°18	490.5	80x74 DIN5482
PG-1802	15.7-29.9	B		230 F7	295	Ø17 x N°10	714	100x94 DIN5482
		C	88 H8	278 F7	314	Ø15 x N°18	499.5	80x74 DIN5482
PG-2502	14.6-20-36.2	A	245 F7	340 F7	370	Ø17 x N°15	798.5	100x94 DIN5482
		C	102 H7	340 F7	370	Ø17 x N°15	595.5	100x94 DIN5482
PG-3002	45.3	C	102 H7	340 F7	370	Ø17 x N°15	601	100x94 DIN5482
PG-3503	53.7	C	122 H7	340 F7	370	Ø17 x N°15	680.5	120x22x5 DIN5480

(*) Suggested ratios. Other ratios available on request.

Size	D3A						D4A	
	S1	S2	DP1	DP2	X	Y	S4	T
PG-702	1" 3/8 Z6	1" 3/8 Z6	40x36 DIN5482	60.3 H8	157	262		
PG-1002	1" 3/8 Z6	1" 3/8 Z6	40x36 DIN5482	60.3 H8	157	262		
PG-1602	1" 3/8 Z6	1" 3/8 Z6	40x36 DIN5482	60.3 H8	157	262		
	1" 3/8 Z6	1" 3/8 Z6	40x36 DIN5482	60.3 H8	157	262	1" 3/8 Z6	156.8
PG-1802	1" 3/8 Z6	1" 3/8 Z6	40x36 DIN5482	60.3 H8	157	262		
	1" 3/8 Z6	1" 3/8 Z6	40x36 DIN5482	60.3 H8	157	262	1" 3/8 Z6	156.8
PG-2502	1" 3/8 Z6	1" 3/8 Z6	40x36 DIN5482	60.3 H8	157	262		
	1" 3/8 Z6		40x36 DIN5482	60.3 H8	157	262	1" 3/8 Z6	156.8
PG-3002	1" 3/8 Z6		40x36 DIN5482	60.3 H8	157	262	1" 3/8 Z6	156.8
PG-3503	1" 3/8 Z6		40x36 DIN5482	60.3 H8	157	262	1" 3/8 Z6	156.8

PG MODULAR AUGER DRIVES FOR SELF-PROPELLED HORIZONTAL FEED MIXERS

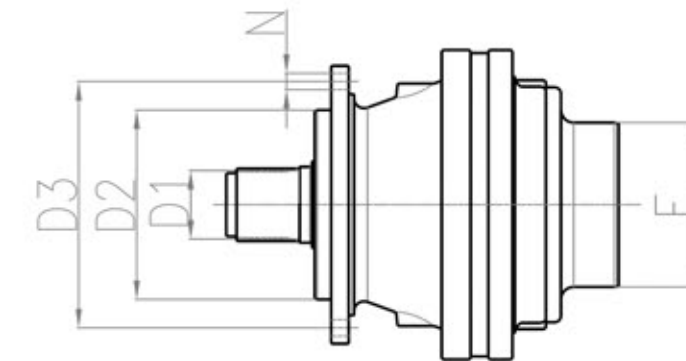


Size	Transmission Ratio (*) i	D1	D2	D3	D4	N	E (**)
PG-1602	22.14-33.6	80x74 DIN5482	225 F7	278 F7	314	Ø15 x N°18	SAE B / SAE C
PG-2502	20-36.2	100x94 DIN5482	245 F7	340 F7	370	Ø17 x N°15	SAE B / SAE C

(*) Suggested ratios. Other ratios available on request.

(**) Others available on request.

PG MODULAR DRIVES FOR MILLING HEAD ON SELF-PROPELLED FEED MIXERS



Size	Transmission Ratio (*) i	D1	D2	D3	N	E (**)
PG-161	3.55-2.49-5.60	40x36 DIN5482	110 F7	165	Ø10.5 x N°8	SAE A / SAE B / SAE BB / OMTS
PG-251	4.13-5.17-6.00	58x53 DIN5482	150 F7	195	Ø13 x N°10	SAE A / SAE B / SAE BB / OMTS
PG-501	4.13-5.17-6.00	58x53 DIN5482	150 F7	195	Ø13 x N°10	SAE A / SAE B / SAE BB / OMTS

(*) Suggested ratios. Other ratios available on request.

(**) Others available on request.

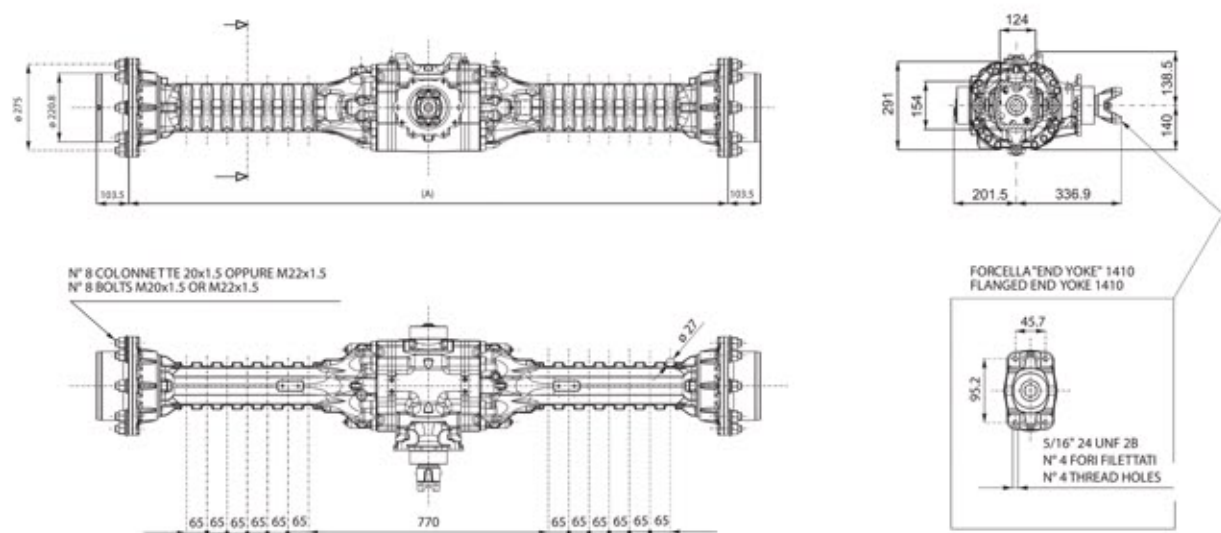


RIGID AND STEERING AXLES

The **238 axle series** is suitable for self-propelled feed mixers up to 24 m³. With its **steering and rigid versions**, the 238 axle fits both 2-Wheel-Steer and 4-Wheel-Steer vehicles and, thanks to its **modularity**, it easily meets market demand in terms of **brake options, reduction ratios and differential types**.

For 2-Wheel-Drive vehicles, the **hydraulic motor** can be directly mounted on axle input. For 4-Wheel-Drive vehicles, the axle can be equipped with **double speed gearbox S-528 series** to manage different speeds for transfer as well as for work mode. The gearbox can be provided with the 4-Wheel-Drive disconnection option which allows the user to disengage the transmission between front and rear axles in transfer mode.

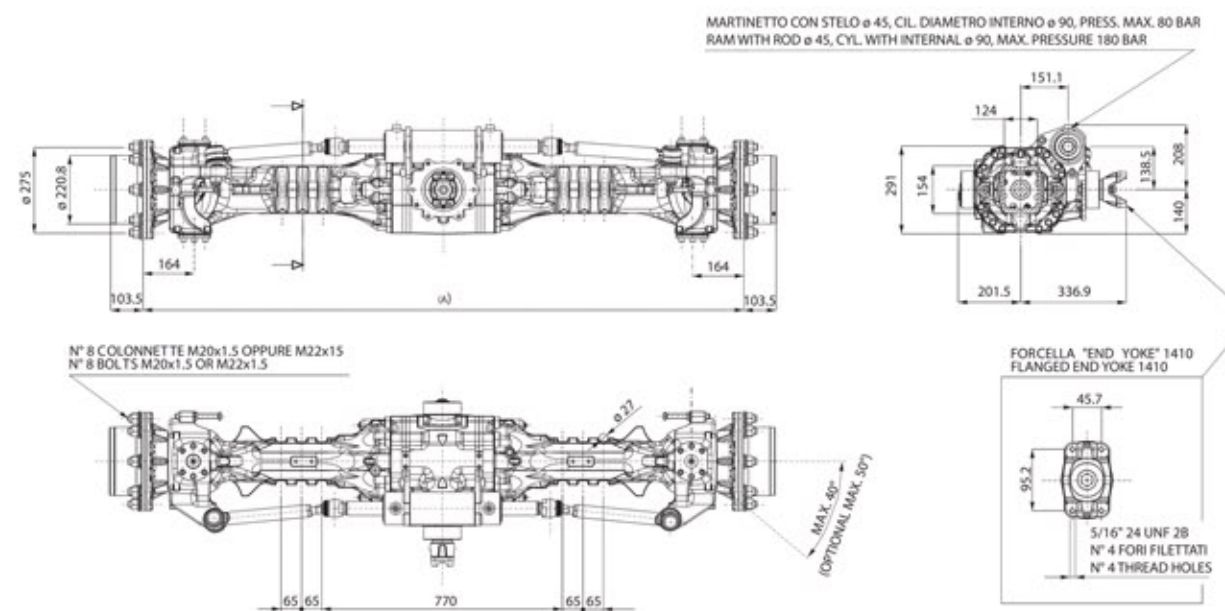
F-238 RIGID AXLE FOR SELF-PROPELLED VERTICAL FEED MIXERS



Type	Maximum Static Load daN	Maximum Dynamic Load daN	Maximum Output Torque daNm
F-238	22,000	12,000	3,400

Type	Reduction Ratio at Differential				Reduction Ratio at Wheels	Total Reduction Ratio				Track-Dimension A mm	Service Brake Type
F-238	2.23	2.7	3.25	4.11	6:1	13.41	16.20	19.50	24.66	1,660-1,790-1,920-2,050	Oil Immersed Brake Discs

S-238 STEERING AXLE FOR SELF-PROPELLED VERTICAL FEED MIXERS



Type	Maximum Static Load daN	Maximum Dynamic Load daN	Maximum Output Torque daNm
S-238	22,000	12,000	3,400

Type	Reduction Ratio at Differential				Reduction Ratio at Wheels	Total Reduction Ratio				Track-Dimension A mm	Service Brake Type
S-238	2.23	2.7	3.25	4.11	6:1	13.41	16.20	19.50	24.66	1,660-1,790-1,920-2,050	Oil Immersed Brake Discs



PLANETARY WHEEL DRIVES

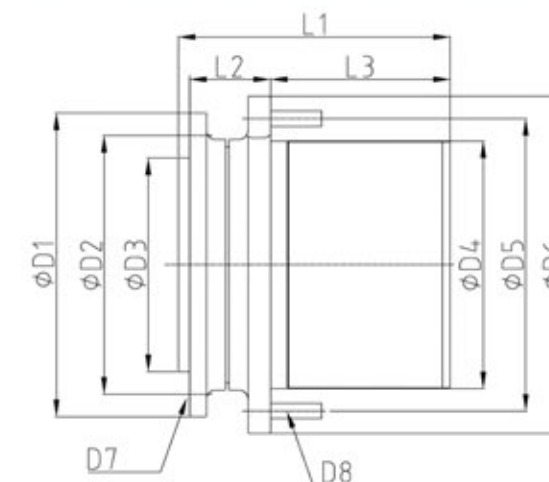
PGWF PLANETARY WHEEL DRIVE SERIES FOR SELF-PROPELLED FEED MIXERS

Comer Industries' planetary wheel drives PGWF series, available with either two or three stages of reduction, can deliver maximum torque between 8,000 Nm and 45,000 Nm and can be used on most self-propelled feed mixers available to the market.

The compact design of the PGWF series allows seamless integration on agricultural applications, such as feed mixers, at a competitive price. Comer Industries' drives deliver enhanced performance in line with the reliability, travel speed and desired mobility necessary to succeed in these applications.

By incorporating a disconnect feature, offered as a product option for the PGWF series, Comer Industries' wheel drives allow a vehicle to be towed in case of failure within the hydraulic system. Additionally, these drives can readily accept a SAE flange hydraulic motor, as well as cartridge style motors.

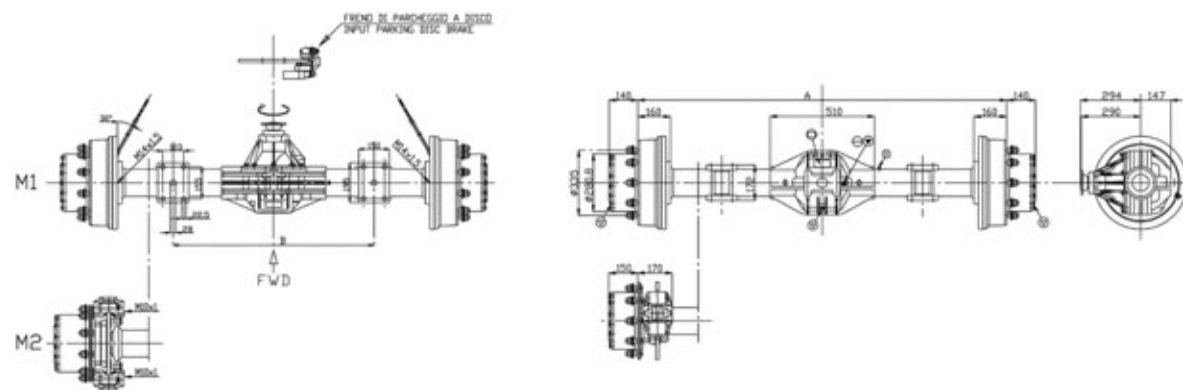
Size	Transmission Ratio i	Maximum Torque Nm	Braking Torque Nm	Maximum Input Speed rpm	Minimum Opening Pressure bar	Weight kg
PGWF-802	12-54	10,000	150-350	3,500	10-20	58
PGWF-1702/3	19-141	18,000	350-650	3,500	10-20	98
PGWF-2502/3	14-151	25,000	350-650	3,500	10-20	120
PGWF-3602/3	14-151	36,000	350-650	3,500	10-20	140
PGWF-4802/3	14-151	48,000	350-650	3,500	10-20	170



Size	D1	D2	D3	D4	D5	D6	L1		L2	L3		D7	D8
							2/3 Stages	2/3 Stages					
PGWF-802	270	230	190	220	275	310	270	72	161	M16x16	M20x8		
PGWF-1702/3	330	300	270	280	335	372	287/332	96	161/206	M16x18	M22x10		
PGWF-2502/3	320 (*)	285 (*)	240 (*)	300	355	400	324/342 (*)	82	222/240	M20x20	M18x20		
PGWF-3602/3	350 (*)	310 (*)	270 (*)	320	380	420	340/361 (*)	90	220/241	M20x16	M22x16		
PGWF-4802/3	350 (*)	310 (*)	270 (*)	350	400	435	354/381 (*)	90	234/261	M20x16	M22x16		

(*) Dimensions may change according to the selected hydraulic motors.

5970 RIGID AXLE FOR SELF-PROPELLED HORIZONTAL FEED MIXERS



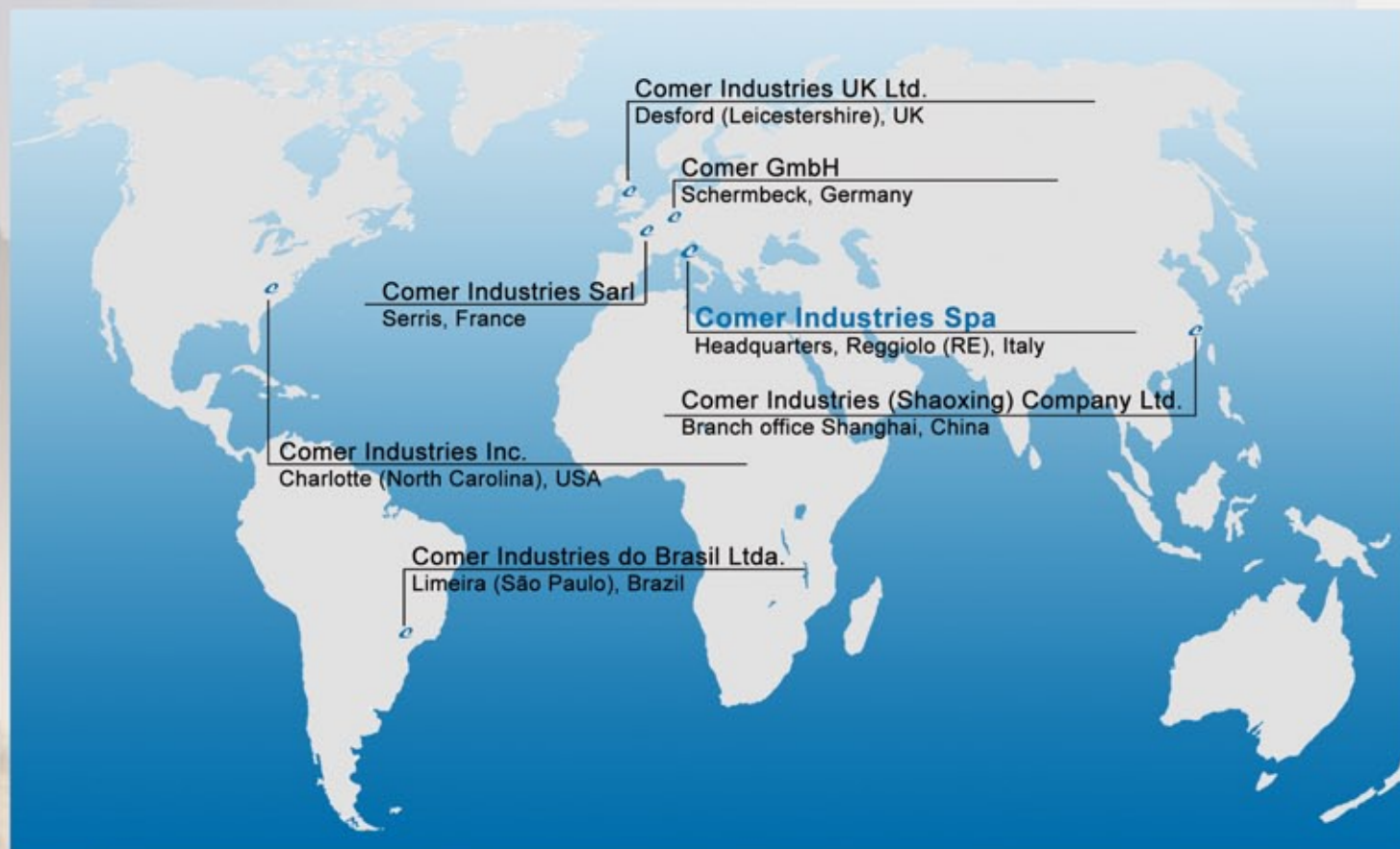
- TAPPO CARICO OLIO / FILL OIL PLUG
- TAPPO LIVELLO OLIO / LEVEL OIL PLUG
- TAPPO SPIATO OLIO / BREATHER PLUG
- TAPPO SCARICO OLIO / DRAIN OIL PLUG

Type	Maximum Static Load daN	Maximum Dynamic Load daN	Maximum Output Torque daNm
5970	17,500	15,000	3,000

Type	Reduction Ratio at Differential						Reduction Ratio at Wheels	Total Reduction Ratio					
	2.687	3.23	3.7	4.455	5.30	6.428		5.25:1	14.107	16.958	19.425	23.389	27.825
5970	2.687	3.23	3.7	4.455	5.30	6.428	5.25:1	14.107	16.958	19.425	23.389	27.825	33.747

Type	Wheel Hub Type	Track-Dimension A mm	Service Brake Type
5970	M1	1,800-2,000	Drum Brake 400x80
	M2	1,781-2,000	Disc Brake Ø380 with Caliper

A GLOBAL PRESENCE



Comer Industries operates in **the main world markets** with its own sales organization and it is present in major foreign countries with its own **sales subsidiaries** in the United States, Brazil, China, Germany, France and the United Kingdom.

In countries where there are not own branches, product distribution is carried out through an **international network of distributors and agents**. In Italy a direct sales network is operating.

“Comer Industries’ sales organization ensures greater proximity to strategic customers and allows for a more reactive market response.”

COMER INDUSTRIES HEADQUARTERS

Comer Industries Spa (Headquarters)

Via Magellano, 27 - 42046 Reggio (RE) - Italy
Tel. +39 0522 974111
Fax +39 0522 973249
Email: info@comerindustries.com

Shipment department

via E. Fermi, 1 - 42046 Reggio (RE) - Italy

FOREIGN SUBSIDIARIES

Comer Industries Inc.

12730, Virkler Drive Charlotte NC 28273 - 3882 P.O. Box 410305 - Charlotte NC 28241-0305 - USA
Tel. +1 704 588 8400
Email: arojas@comerinc.com

Comer Industries UK Ltd.

Units 2/3 Merry Lees Industrial Estate, The Sidings, Desford - Leicestershire LE9 9FE - UK
Tel. +44 1530 231504
Email: moris_ravagnani@comerindustries.com
Note: calls may be recorded for training and monitoring purposes

Comer Industries Sarl

Parc Faraday, 1 rue Christian Doppler - 77700 Serris - France
Tel. +33 01 6031 7050
Email: commercial@comerindustries.com

Comer GmbH

Im Heetwinkel, 19 - 46514 Schermbeck - Germany
Tel. +49 2853 912 67-0
Email: sales@comerindustries.com

Comer Industries (Shaoxing) Company Ltd.

Branch office: Prime Dynapolis, Unit 912, No. 587-597 Langao Road, Putuo district - Shanghai - China
Tel. +86 2162 112718
Fax +86 2162 119454
Email: sales@comerindustries.com
www.comerindustries.com.cn

Comer Industries do Brasil Ltda.

Rua Palmyro d'Andréa, 22 - CEP 13.485-404 Jardim Porto Real II - Limeira (SP) - Brazil
Tel./Fax +55 19 3442 9627
Email: contato@comerindustries.com.br
www.comerindustries.com.br

Please refer to Comer Industries website for updated information: <http://www.comerindustries.com/en/contacts>

Please take advantage of your nearest Comer Industries' representative that will support you during the selection of the best solution for your new feed mixer.



42046 Reggiolo (RE) - Italy - via Magellano, 27
Tel. +39 0522 974111 Fax +39 0522 973249
info@comerindustries.com - www.comerindustries.com